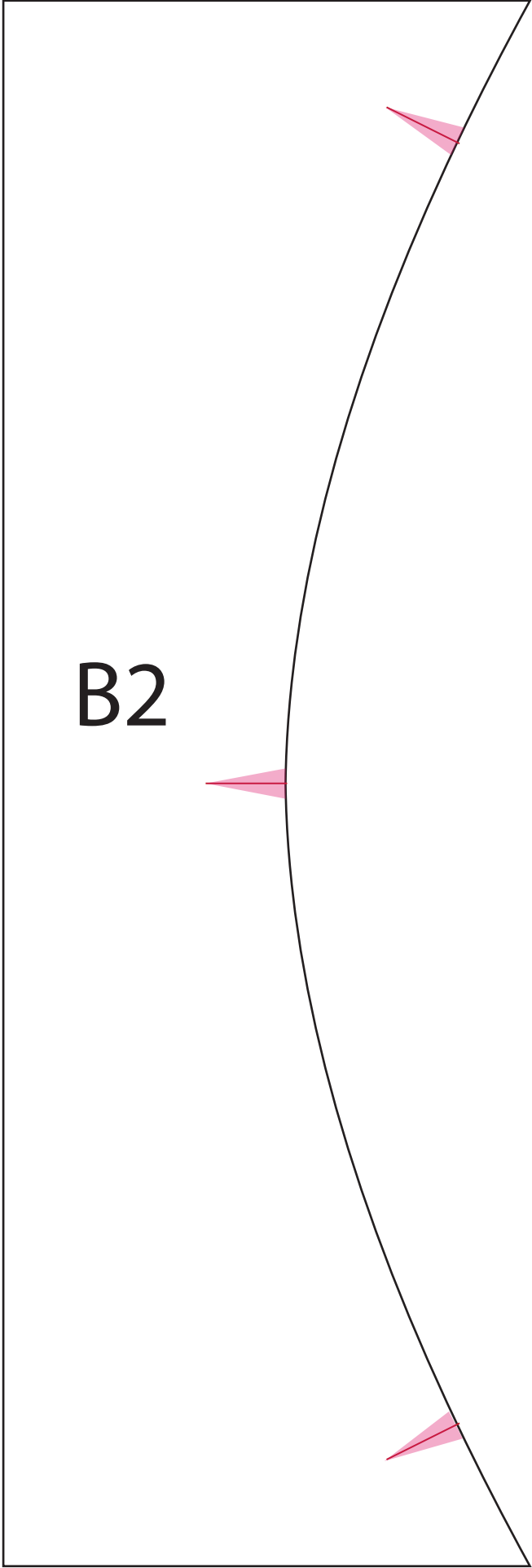


The above square should measure 1"×1".

If it doesn't, check your printer settings. Many printers have an option that says something similar "shrink to fit" or "scale to fit" which resizes the printout to fit the page. If that is selected, turn it off and reprint the templates.



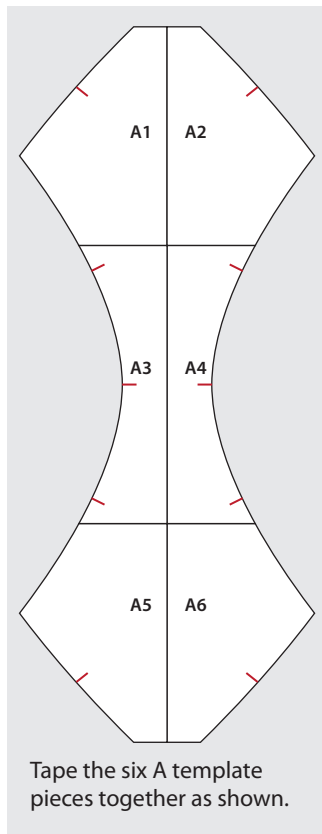
B2

B3

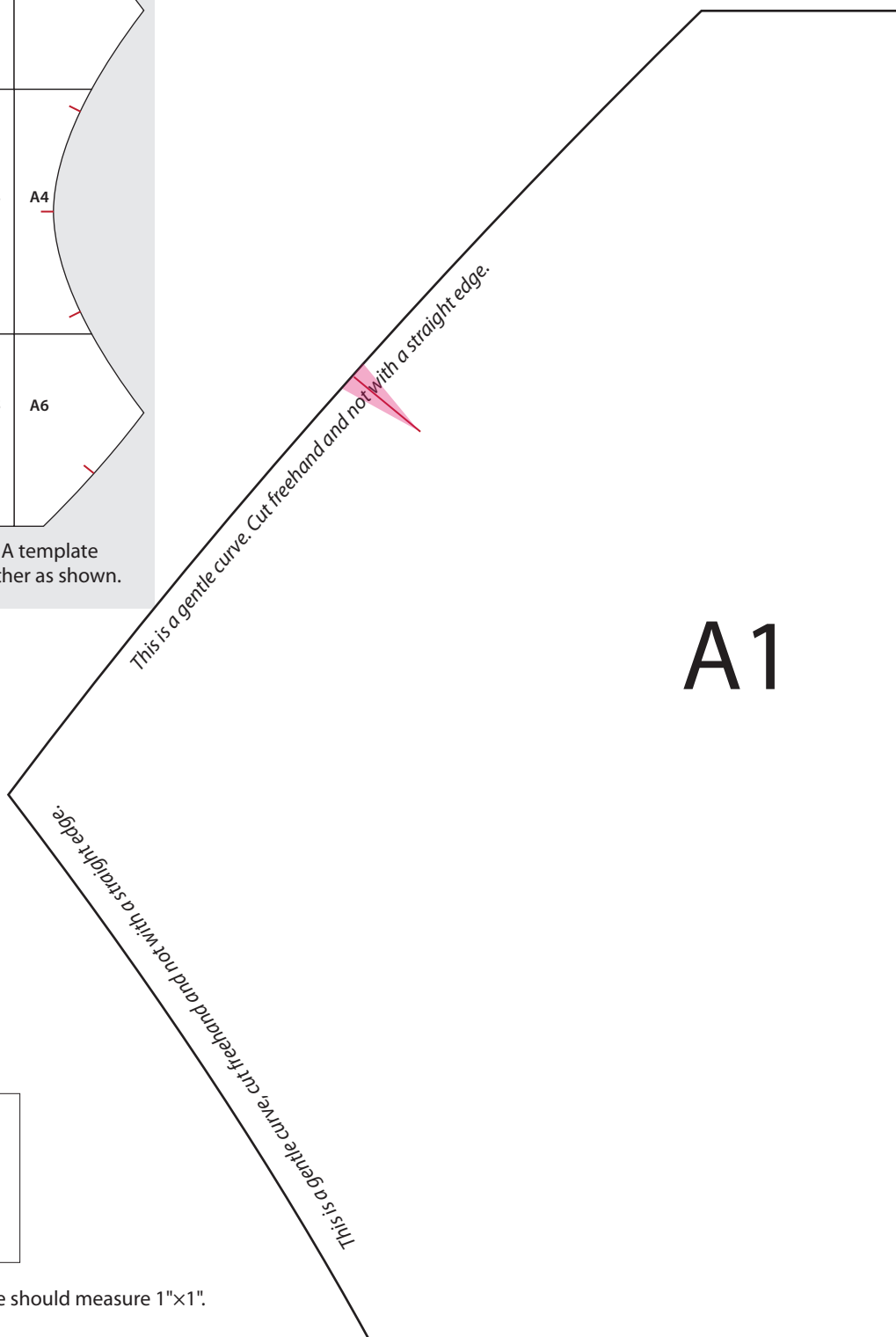
This is a gentle curve, cut freehand and not with a straight edge.

This is a gentle curve. Cut freehand and not with a straight edge.

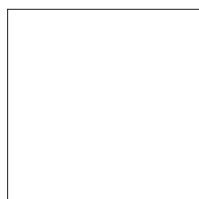




Tape the six A template pieces together as shown.

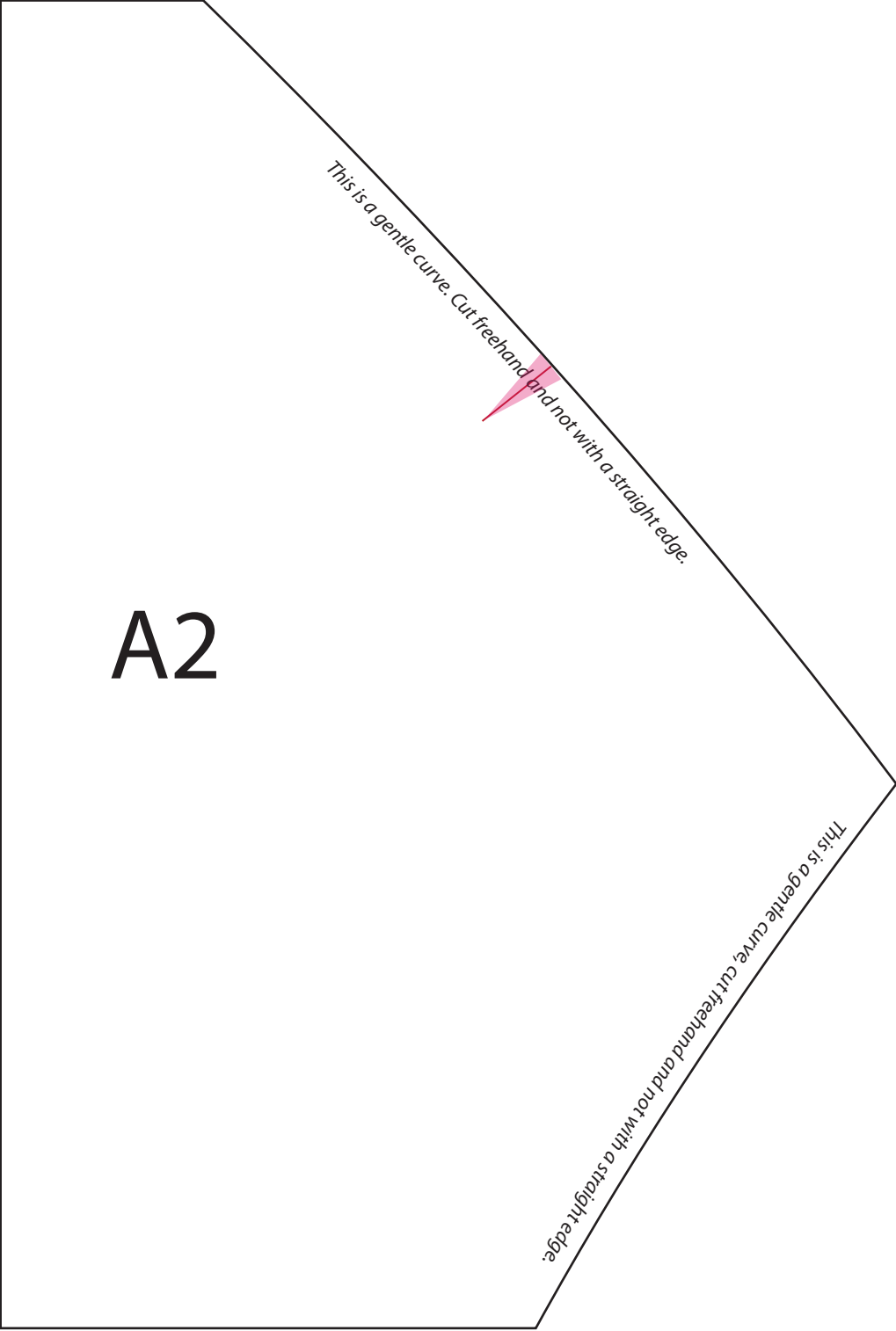


A1



The above square should measure 1"×1".

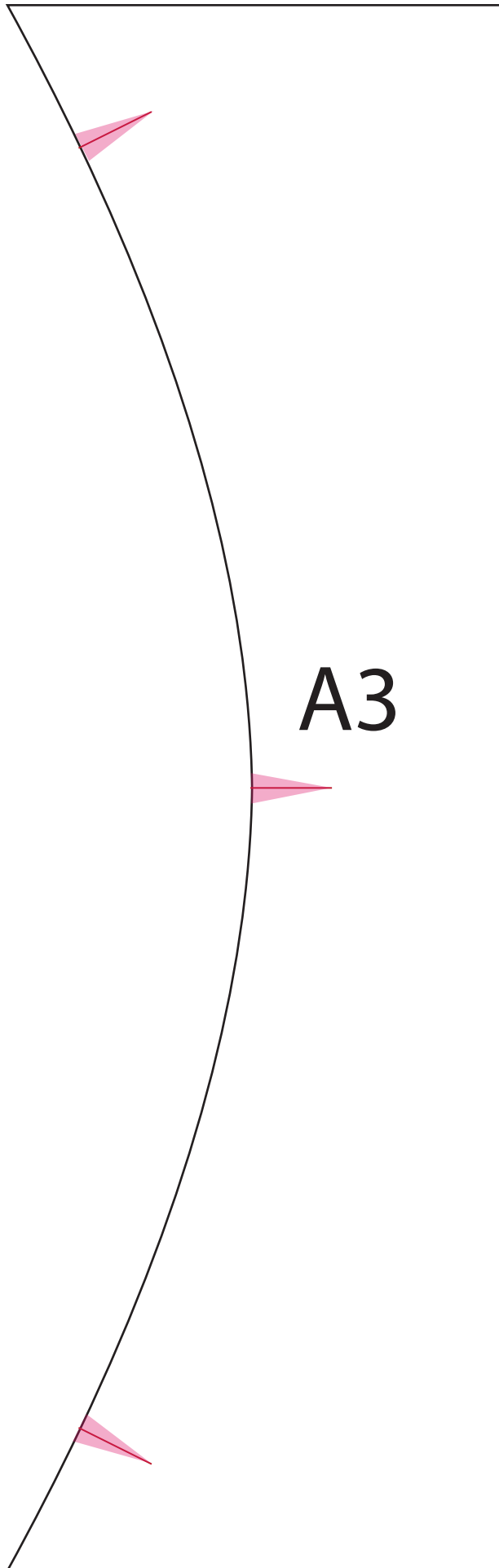
If it doesn't, check your printer settings. Many printers have an option that says something similar "shrink to fit" or "scale to fit" which resizes the printout to fit the page. If that is selected, turn it off and reprint the templates.



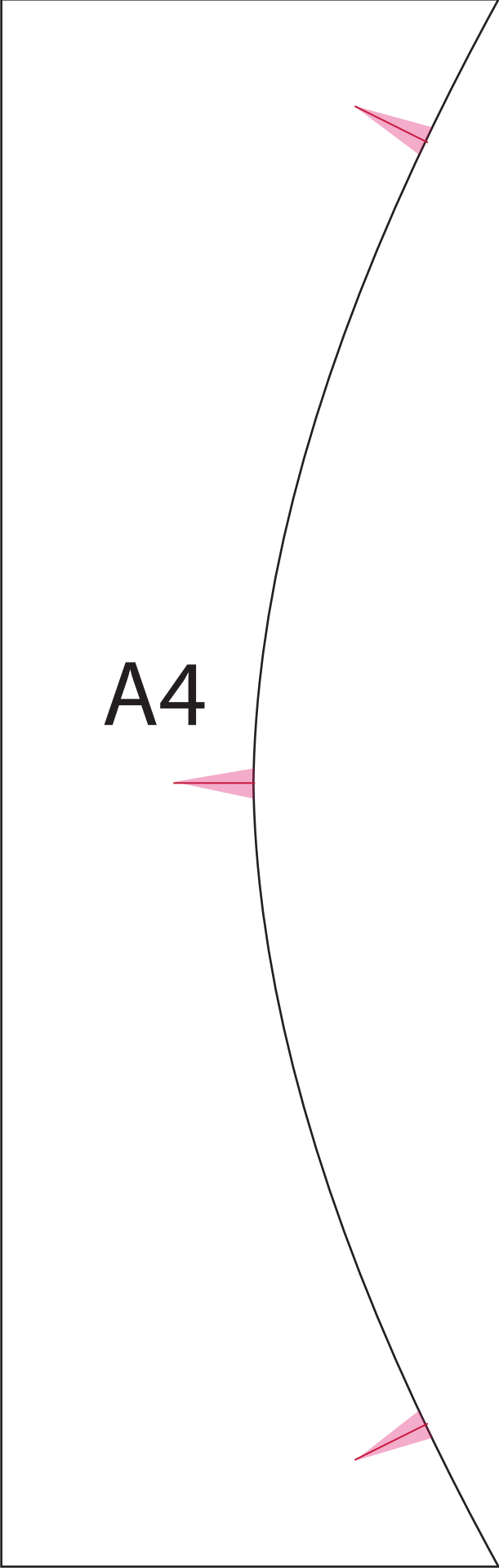
A2

This is a gentle curve. Cut freehand and not with a straight edge.

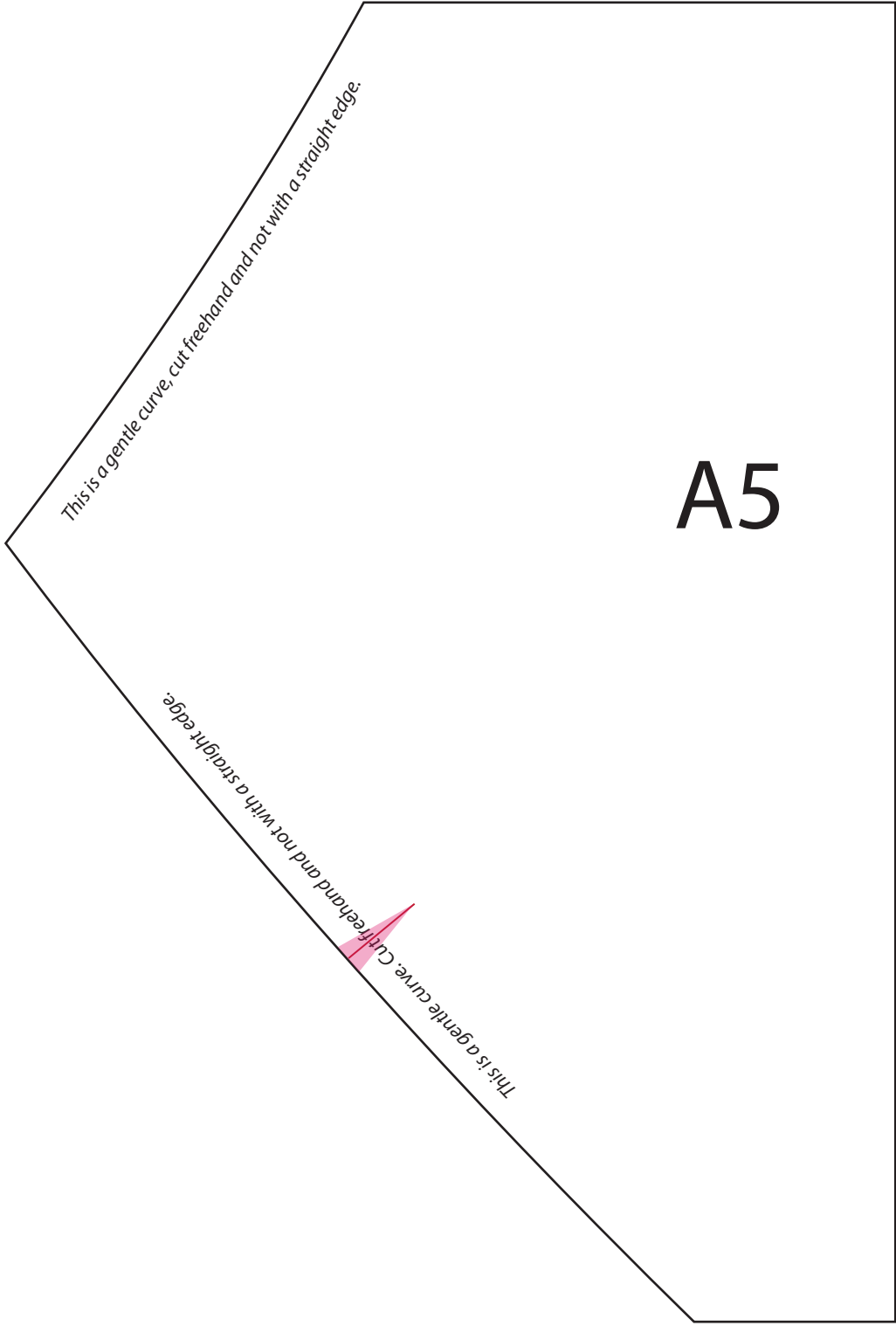
This is a gentle curve. Cut freehand and not with a straight edge.



A3



A4



This is a gentle curve, cut freehand and not with a straight edge.

A5

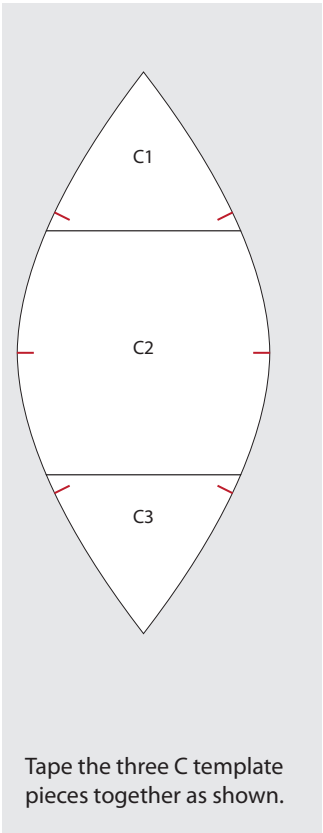
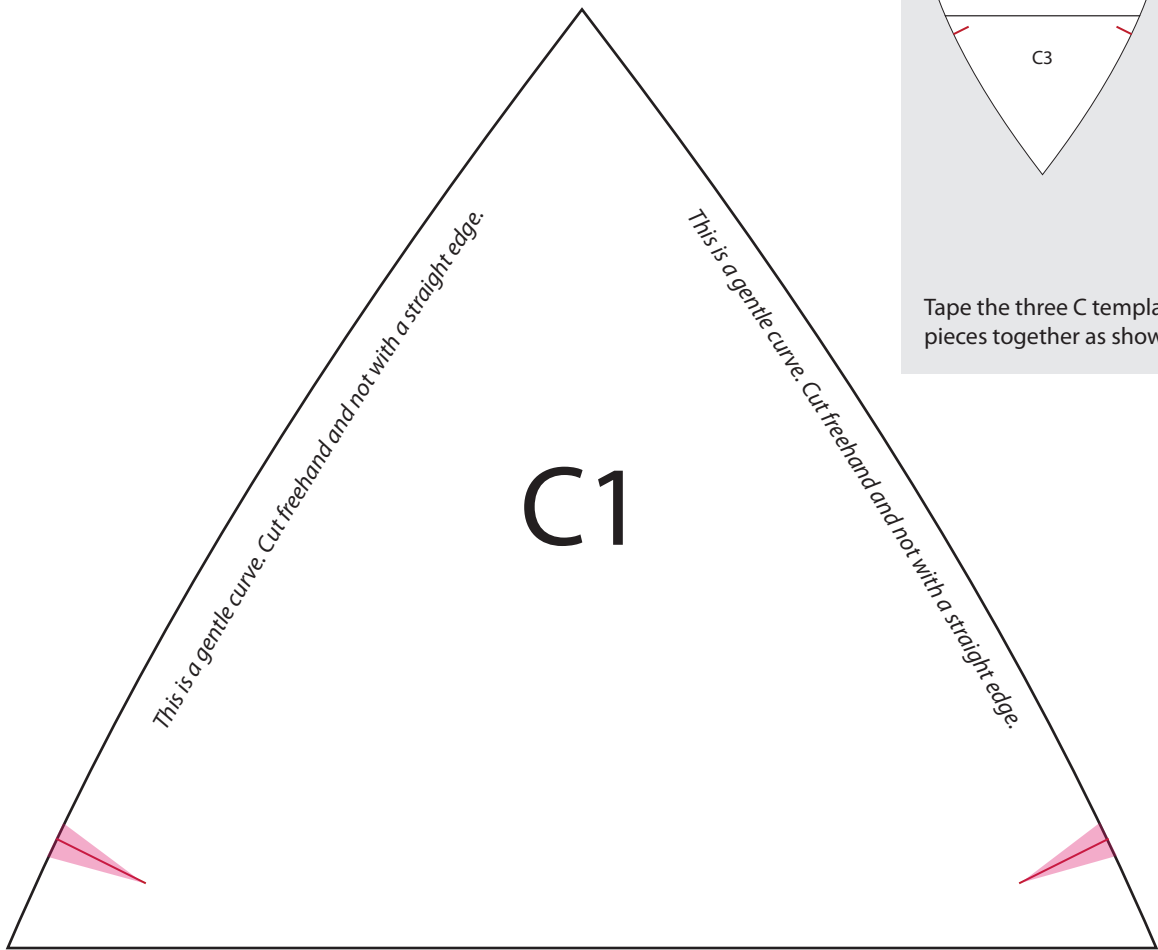
This is a gentle curve. Cut freehand and not with a straight edge.

A6

This is a gentle curve, cut freehand and not with a straight edge.

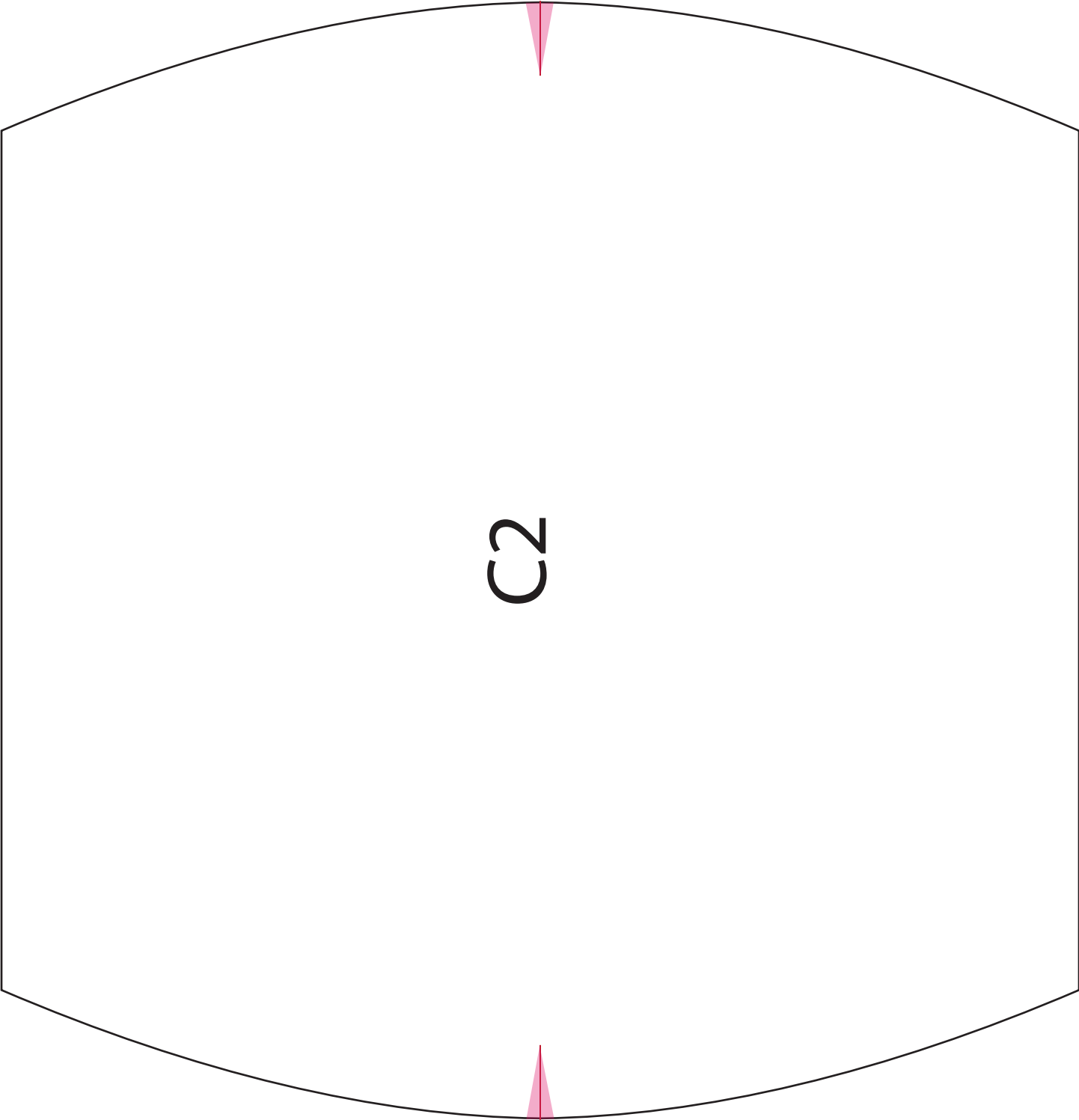
This is a gentle curve. Cut freehand and not with a straight edge.

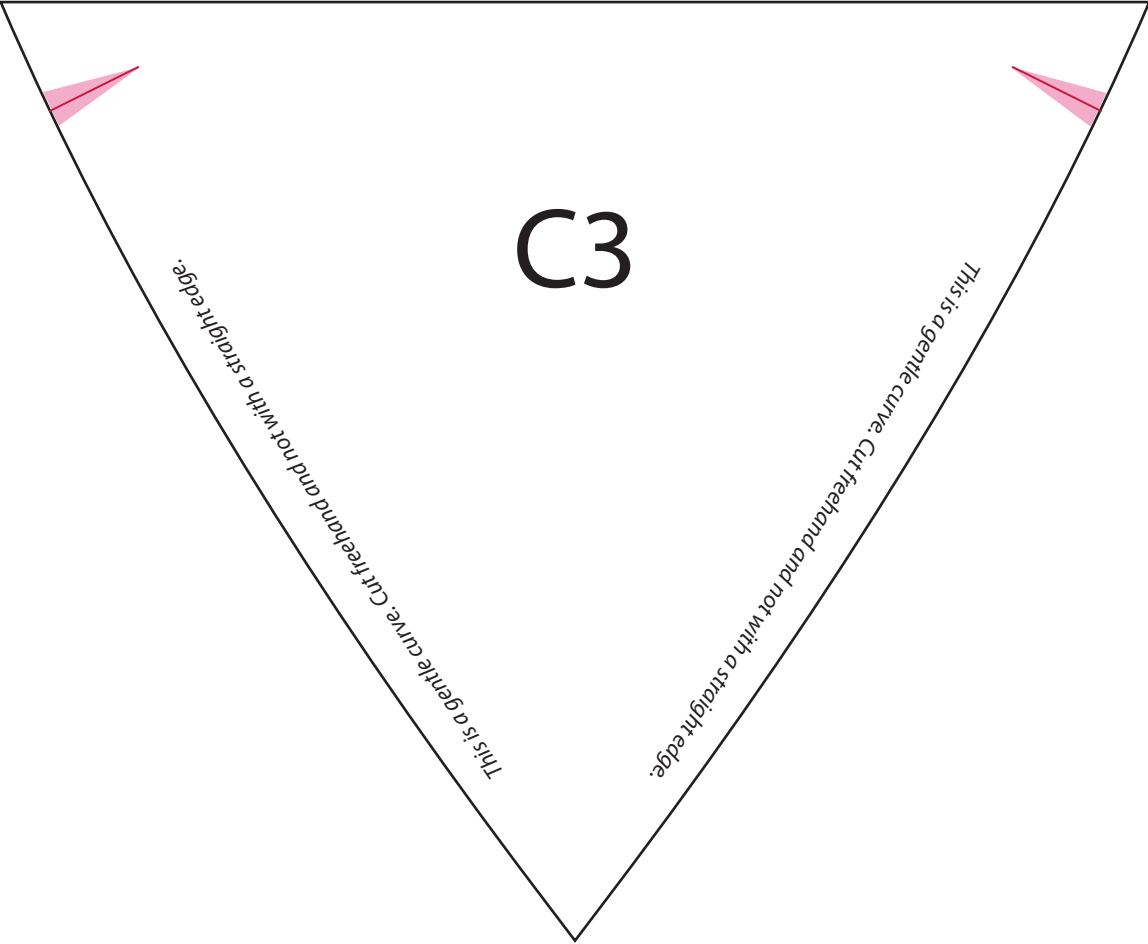


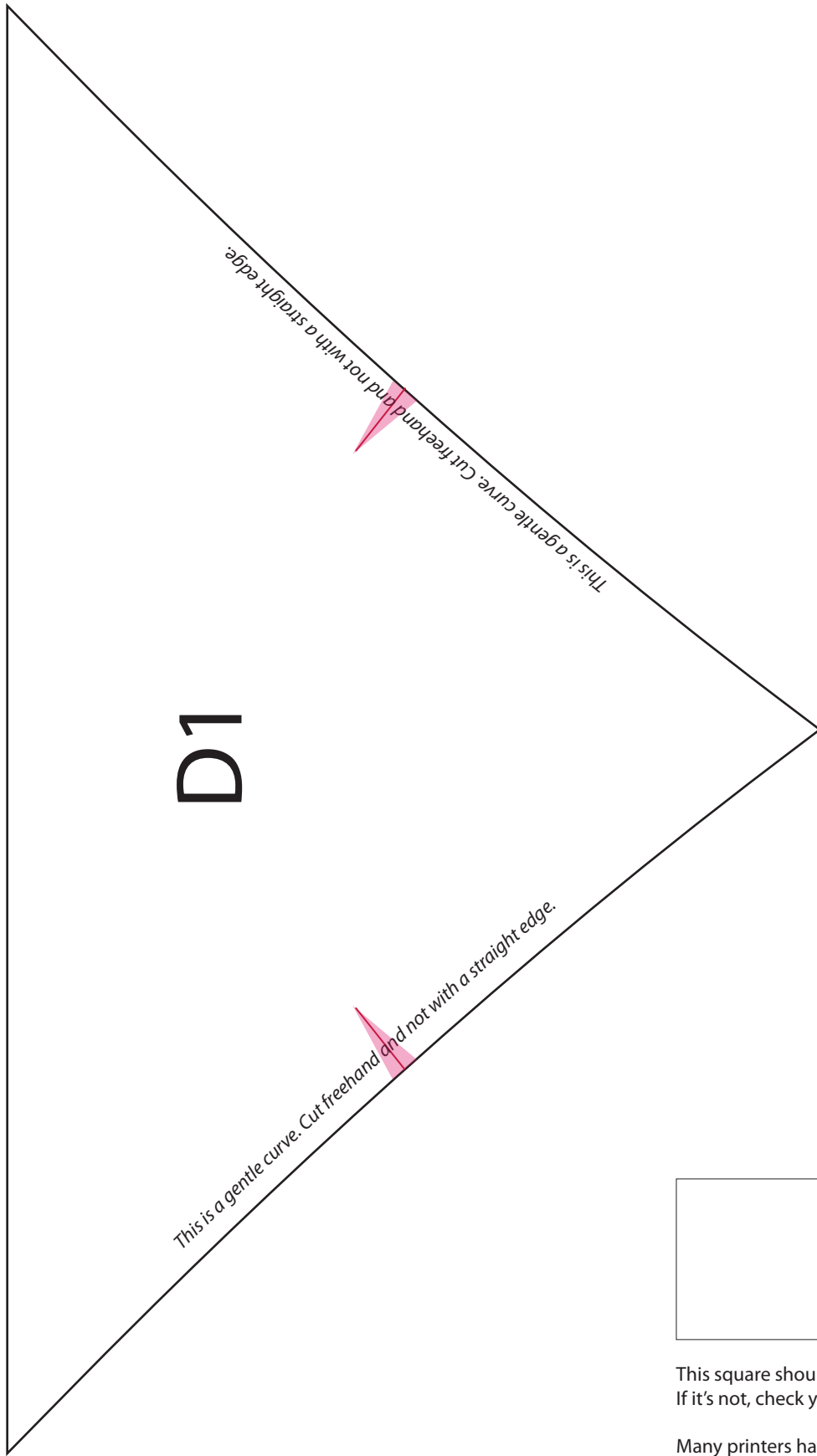


The above square should measure 1"×1".

If it doesn't, check your printer settings. Many printers have an option that says something similar "shrink to fit" or "scale to fit" which resizes the printout to fit the page. If that is selected, turn it off and reprint the templates.







This square should measure exactly 1"x1".
If it's not, check your printer settings.

Many printers have an option that says something similar to "scale to fit" which shrinks or expands the printout to fit the page. You *don't* want this option selected.